

Kitchen Inspiration

Discover RK-Tec, the Unique & Exciting Approach to Kitchen Design

Great
Design
Products
Installation



Your Planning Guide

Real Home
Case Studies

WHY SHOULD YOU VISIT ...
**THE POTTON
SHOW CENTRE**

Design Advice from
**The Kitchen
Professionals**



COOKING PASSION SINCE 1877



B57CR22N0B

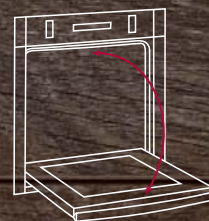
SLIDE & HIDE® WITH PYROLYTIC SELF-CLEANING

THE ONLY OVEN WITH THE DISAPPEARING
DOOR CLEANS ITSELF TOO

For cooks who create with passion, a little mess is all just part and parcel of the process. With the NEFF Slide&Hide® single oven now available with pyrolytic self-cleaning, dealing with oven spatter and spillages won't eat into valuable dining time.



ACCESSIBLE



SPACE SAVING



UNIQUE

Introduction

Welcome to Kitchen Inspiration

W

elcome to our 8th edition of Kitchen Inspiration magazine, brought to you by Homebuilding & Renovating magazine and in conjunction with the RK-Tec members (Neff, Siemens, Bosch, Dekton, Franke, Carron, Blum, Silestone, Sensio, and Callerton).

Products



Design Attributes



A prestigious group of manufacturers from the kitchen industry, with a joint aim & philosophy to promote the vital ingredients required of all successful kitchen projects'

RK-Tec as the list demonstrates, involves a prestigious group of manufacturers from the kitchen industry, with a joint aim and philosophy to promote the vital ingredients required of all successful kitchen projects: - great design, great products and great project management.

From all of the team at RK-Tec

Enjoy

RK-Tec's dedication to their quest is aptly demonstrated by the content of our latest magazine. As ever we have real-life kitchen case studies to inspire you, further information about RK-Tec's involvement with Potton's amazing Show Centre and Self Build Academy, updates on the interesting developments in design education and qualifications within the industry, along with a wealth of other insightful kitchen information. <<



Unique Destination



3rd Time Around

Contents

- >> Page 4 - Design
- >> Page 6 - Products
- >> Page 8 - Installation
- >> Page 10 - Kitchen Spotlight - Sinks & Taps

- >> Page 11 - StudioLine: elegance and function
- >> Page 12 - Design Attributes
- >> Page 16 - Kitchen Spotlight - Space Management
- >> Page 18 - Unique Destination

- >> Page 23 - Why Should You Visit ...
- >> Page 24 - 3rd Time Around
- >> Page 30 - Kitchen Knowledge
- >> Page 34 - Ultra-Compact Surfaces

With Thanks To:
Darren Chung (photography), Louise McCreath (words) & the associated brands <<

Design



Handle-less furniture offers a modern, sleek appeal that keeps your kitchen fuss-free.



Siemens iQ700 built-in ovens with fast preheat and coolStart to shorten your cooking time.



Multiple seating areas invite you in and encourage the spaces to be used for dining, relaxing, socialising and much more.





Handle-less Monza doors in Matt Graphite with Mocca Stain, manufactured by Callerton in the North East of England.

What's the initial vital ingredient required of all truly successful kitchens?

The answer is simple and relates to first-rate design input at an early stage of your project from a specialist kitchen designer. In doing so you will ensure your kitchen not only looks the part, but that all of your particular needs are fulfilled.

Without spending time and effort developing a design that explores your requirements and builds them into a creative concept, your kitchen is unlikely to fulfil its true potential. It's hard to know where to begin when embarking on a project. So to achieve an impressive kitchen with outstanding performance, it's well worth engaging the services of such a specialist.

A further tip would be to utilise RK-Tec's extremely useful and insightful 'Design Criteria' document (available at www.rk-tec.co.uk). It aims; not only to establish what you require from your new kitchen, but also provides your chosen design professional with this insight and knowledge. The more they comprehend your aims and ambitions for your kitchen — the more effective they can be in the creation of this.

Ensuring the design is spot-on and fulfils all your needs and requirements, prior to embarking on the order and on-site phases, is important. Design professionals utilise cutting edge CAD packages such as Winner Design, enabling them to create amazing life-like visuals of your project in order that you are fully engaged and on-board throughout the process. Remember alterations at this stage are cost neutral, changes later in proceedings will hit your pocket. <<

When do you start planning your kitchen?

With plumbing, ventilation, electrics, lighting, underfloor heating, windows, and doors as well as the shape of the room all having an impact on your kitchen design, starting to plan as early as possible is essential. Contact your local independent design-led kitchen specialist at an early stage to begin designing and benefit from their wealth of experience to ensure your dream kitchen is achieved.

Products

Industrial design with Kingston doors painted Inky Green and Chelsea doors in a special paint finish, manufactured by Callerton in the North East of England.



What statement do you want to make?

Beautiful kitchen furniture will bring your home to life by creating a focal point for socialising and family time. Choose quality appliances that help to make cooking stunning meals easier while shouting elegance and luxury. Hard-wearing worktops will ensure your kitchen looks great for years to come while sinks and taps that offer added functionality give that wow factor. Finally, complete your kitchen with lighting for every mood.



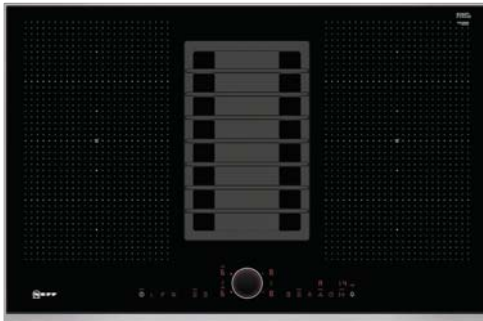
The Dekton® by Cosentino ultra-compact surface is a new and innovative category of surfaces created with the objective of becoming a global leader in the world of architecture and design both for indoor and outdoor spaces.



HN878G4B6B Siemens studioLine Oven with microwave and pulseSteam. With advanced engineering and the blackSteel design, this studioLine oven radiates elegance and exclusivity.



Blum's Orion Grey LEGRABOX drawer with its sheer, sleek side, just 12mm thick.



T58T56BNo NEFF FlexInduction Venting Hob. Powerful extraction and FlexInduction cooking combine in the stylish NEFF venting hob.



Franke's Minerva Electronic 4-in-1 tap delivers 100° boiling, warm or cold filtered water in an instant.



CTL636ES6 Bosch Coffee Machine with Home Connect. The built-in Bosch coffee machine with Home Connect: offers unparalleled variety with highest comfort.

The first step when creating a dream kitchen is establishing the design, style, and layout. Step two involves identifying and specifying all the many products needed to make this a reality. The options available in today's marketplace are vast and can be overwhelming. So where do you begin?

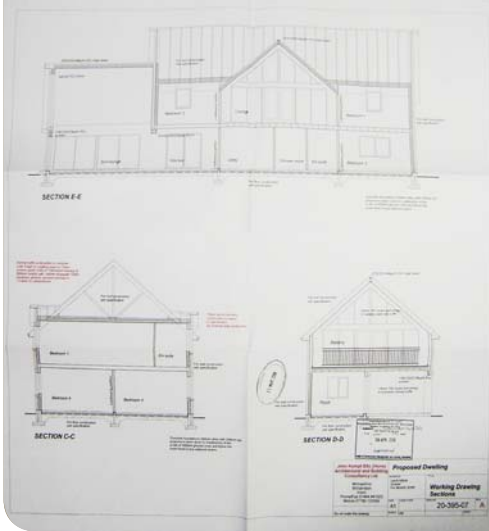
Style preference plays a major role in the decision when choosing furniture - sleek and contemporary, classic, or a combination of both - being crossover/hybrid. When selecting all the other products, your choice should not relate exclusively to appearance, but also to function and longevity. Your professional designer can assist to ensure you select the products which satisfy both your needs and taste.

Utilising the 'Design Criteria' document (www.rk-tec.co.uk) aids in identifying the appliances required for your new kitchen, but which brand and what specifications best satisfy your needs? Once again the product options are vast, and the quality and functionality wide and varied. Visit your local showroom to experience the full potential of the latest appliances with many running cookery demonstrations or dining experiences.

Decisions still need to be made relating to the type and finish of worksurface. Bear in mind you will demand many years of use from this hard-worked aspect of your kitchen. The same is true of sinks and taps, and the many other elements which form the finished room including flooring and lighting, where there is a formidable array of options.

The choices to be made during product selection are plentiful and the product ranges themselves are constantly being developed. But this shouldn't be a chore, be clear about how you need your kitchen to function and explore the exciting innovations showrooms have to offer. Investing a little more in quality, will inevitably pay-off long-term leaving you with a kitchen that stands the test of time. <<

Installation



Accurate and up to date drawings will help ensure work on site is carried out to the correct specification.



Agree detail prior to the build work commencing, as making alterations on site often proves costly.



Cooking smells and steam need to be vented effectively and efficiently to prevent noxious odours lingering. This needs to be planned in collaboration with building work.



Avoid positioning underfloor heating below appliances and cabinetry to prevent damage to these items. This positioning will also increase the efficiency of your system.



Services such as plumbing, gas, electrics and ventilation need to be positioned correctly before the kitchen arrives to prevent costly delays when fitting.





Balham 90 doors in two contrasting painted finishes, manufactured by Callerton in the North East of England.

To truly fulfil all your hopes and expectations for your new kitchen, a vital ingredient beyond the first-rate design and quality products required, relates to project management. This final stage involves the installation of the furniture and selected products. But long before, a plan of action; in relation to project management needs to be instigated.

Whether your project is a new build, extension, renovation or replacement, the kitchen installation phase is the culmination of all that has gone before. Hence why kitchens should be designed in conjunction with the architectural phase and not once the build is underway. That means your services such as power, plumbing, and extraction are all ready and in the right place before fitting the kitchen.

Take underfloor heating as an example, the kitchen furniture and appliances cannot sit above this, meaning the kitchen footprint is required prior to starting on site. The same is true of down draught extraction, where the pipes are embedded into the foundations. As such, the kitchen design needs to be well thought out from the outset.

Managing a successful kitchen project is complex and involves a wide range of skills, knowledge, and experience. Project management is not only restricted to goods and services, but also involves scheduling the various tradespeople required to successfully install your kitchen in a logical and timely manner. You'll find all these attributes in a professional kitchen specialist. Involving the right team in your project is always the best place to start, and you can check their previous projects from their portfolio of work to confirm their credentials. <<

Where can I compromise?

Bring together your research into a wish list and start narrowing it down by speaking with your designer. Being open and honest about your budget, practicality, and space is important but ensure you do not lose sight of the magic and dream you started with. Purchasing quality products from established manufacturers will ensure the longevity of your new kitchen. Planning carefully and getting the design right on paper enables you to save on installation by reducing the timescale.

Kitchen Spotlight

Sinks & Taps

Taps Offer Ever More Functionality & Choice of Finishes



nce a straightforward purchase, the kitchen tap now presents more choice than ever with different functionalities such as instant boiling water or quality filtration and a vast amount of design styles, colours and finishes including brass, graphite, copper, brushed nickel and matt black, creating a statement piece rather than just a practical kitchen item.

Instant boiling water taps are a smart choice as they offer environmental benefits and convenience, consuming less energy in comparison to kettles and allowing the consumer to undertake a multitude of tasks in the kitchen such as food preparation, blanching, getting things on the boil quickly or sterilising items instantly. 3-in-1 taps offering hot, cold and boiling water are a highly popular choice, but people are also recognising the benefits of 4-in-1 models also offering filtered water.

While standard mechanical models are a highly popular choice, electronic options like Franke's Minerva Electronic 4-in-1 Instant Boiling Water Tap range, offer enhanced functionality and user-friendliness while being just as straightforward to install and maintain.

Filter taps give you pure, fresh tasting water at home, especially as we look to reduce plastic bottle usage'

With just a simple touch and a turn of the dial the Minerva Electronic 4-in-1 taps provides access to filtered 100°C boiling and filtered cold water. They feature pre-set, touch-control 30 and 60 second programmes that automatically dispense either the filtered cold or filtered boiling water, perfect for filling jugs, pans or cafetières without the need to stand over the tap. The 4-in-1 design also enables access to standard mains hot and cold water from a separate lever. When not in use, the taps remain in standby mode and are safe and easy to operate.

Filter taps are another great option to consider giving you pure, fresh tasting water at home, especially as we all look to reduce our plastic bottle usage. This coupled with the wellbeing trend means there is greater interest in kitchen taps with built-in filters that remove impurities and harmful bacteria.

Franke's latest filter tap, the Vital Capsule filter tap features the most advanced and patented water filter system in the world, it also features a unique above the worksurface design that means it can be installed with the same ease as any standard tap with hot and cold mains plumbing.

The Vital Capsule filter tap features a triple filter process removes 99.9% of bacteria and viruses, at the same time retaining all beneficial minerals such as magnesium and calcium, signalling a new generation of filter tap. <<

contact Franke on
tel: 0161 436 6280
or visit the website
www.franke.co.uk

MAKE IT WONDERFUL



The Vital Capsule filter tap range delivers fresh, clean tasting drinking water every time. Patented technology makes it the most advanced cartridge in the world, combining activated carbon with a high-tech membrane filtering water through 0.3 micrometer pore holes, almost 100 times finer than a human hair. Pictured is the Vital Capsule Filter Tap Semi-Pro in Chrome and Gunmetal with flexible hose and spray function - RRP inc VAT £749.



Responding to the trend for different colours and finishes, Franke's Active Plus Pull-Out Spray Tap is available in Graphite (pictured), Matt Black, Brass, Smokey Mirror and Chrome. Pictured in Graphite RRP inc VAT is £256



Franke's Minerva Electronic 4-in-1 tap offers simple push-button functionality, for enhanced convenience and user-friendliness with pre-set 30 and 60 second programmes that are ideal for filling pans, teapots, cafetières and jugs with instant filtered boiling or filtered cold water. RRP inc VAT for the Minerva 4-in-1 tap is £1,852.

A close-up, angled view of the control panel of a Siemens studioLine oven. The panel is black with a silver-colored horizontal trim. It features a large silver-colored rotary knob in the center. To the left of the knob are buttons labeled 'on/off', 'menu', and an information icon. To the right are buttons for a clock, a fan icon, and 'start/stop'. A small digital display is visible above the knob. The background is dark and out of focus.

SIEMENS

studioLine

studioLine: elegance and function in perfect harmony.

We all want to enjoy exclusive, elegant design and cutting-edge functionality in our kitchen.

Every studioLine appliance combines beautiful style and the latest technology to fit demanding lifestyles and individual needs.

With their elegant, minimal appearance, studioLine blackSteel appliances bring understated style to your kitchen. Coordinated design, black stainless steel handles, black stainless steel disc controls and bigger, brighter TFT touchDisplays combine to create a showstopping design statement.

studioLine is defined by exceptional features and details, which are only available in this exclusive range of built-in appliances.

Cook without limits with the freeInduction Plus hob which allows you to move pots and pans of different sizes and shapes freely over the entire surface of the hob without being restricted to predefined cooking zones. The wonderful freeInduction Plus hob provides full access to controlled heat at all times, giving you a new freedom and flexibility in the size, shape and position of your cookware.

Discover sophisticated cool with aCool appliances. Designed to impress the modular cooling range which includes fridges, freezers and wine cabinets can be fitted in different combinations and layouts for full flexibility and ample storage. Tailor your cooling appliances to fit around your lifestyle and individual needs.

Another impressive feature appliance is the studioLine oven with Sous-vide function. Now professional level cooking in your home has never been so easy.

The combination of 100% steam cooking and hot air ensures moisture and texture is maintained throughout, and vacuum-packed ingredients get "slowly heated" under low temperatures. This unique cooking method retains food vitamins and aromas and generates an outstanding taste experience, allowing you to cook really healthy and full-flavour meals to the highest standards.

To experience the studioLine range visit our website to find a studioLine partner near you:
siemens-home.bsh-group.com/uk/studioline

The future moving in.

Design Attributes

What better way to demonstrate the attributes and benefits of engaging a professional kitchen design specialist; than via a real-life case study. Read on to gain an insight into how the designer brought about some fundamental changes to the client's brief, in the creation of this amazing kitchen.



‘A journey whereby all the many options are explored & developed into a design concept that delivers’





The floating bank of Neff appliances includes the N70 Built-in oven with SLIDE&HIDE® for unrestricted access.



These images demonstrate the finished kitchen in comparison to one of the CAD images produced for the client during the design phase.



Jenna Milne is a rising star in the kitchen world, having graduated from Bucks University's inaugural Kitchen Design degree course (with distinction) in 2017, and winning the KBSA's Young Kitchen Designer of the Year award.

The original kitchen featured furniture down both sides, conventional windows, a small island and a dog-leg furniture arrangement in the corner, which incorporated the sink. The concept for the new kitchen had to work within the footprint of the existing room, and the clients intended to install large bi-fold doors providing uninterrupted views over their beautiful garden.

Jenna explained the most contentious aspect of the new design was her suggestion to move the sink from its current position. In doing so the island could be made considerably bigger, whilst ensuring the garden would be enjoyed when working at both the sink and hob. A new wood burning stove could then be incorporated within the kitchen, rather than the adjoining sun room.

Jenna's approach to working with clients is to interpret their aims & objectives, both aesthetically & functionally'

Other aspects of the design phase which Jenna refined related to colours and textures. The clients initially had a preference for white, but by adding contrasting grey tones, wood, and concrete textures, alongside staggered heights and different depths of furniture, a much more interesting and vibrant look was created. The ability to utilise computer aided design software was essential to achieving this outcome, whereby the clients could understand Jenna's vision through detailed graphic imagery.

Jenna's approach to working with clients is to interpret their aims and objectives, both aesthetically and functionally. She considers it a journey whereby all the many options are explored and developed into a design concept that delivers not only what the client wants, but in a way that surpasses their expectations.

Jenna summed it up, "Working as a kitchen design specialist is a fascinating and rewarding occupation". The completed project is a great testament to her undoubted talent and ability. <<

Mixing finishes, various heights, and breaking furniture forward gives the kitchen depth and vibrancy.



Tailored to Touch

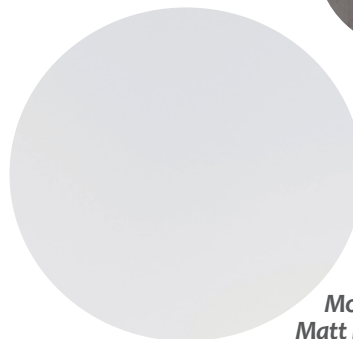
Get the Look



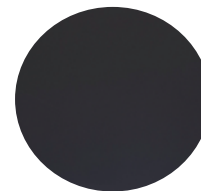
Handle-less
Graphite Profile



Abstract Expressions
Concrete



Monza
Matt Frost White



Monza
Matt Graphite

Kitchen Spotlight

Space Management

Experience Elegance with Blum's LEGRABOX

Leading furniture fittings provider, Blum, think differently with their innovative LEGRABOX drawer system. Linear. Sleek. Slim. That's Out of the LEGRABOX thinking. It's the must-have storage solution for classic or contemporary kitchens alike.

It's the must-have storage solution for classic or contemporary kitchens alike'

As well as looking the part, LEGRABOX delivers on practical and functional form with quality, smooth-gliding runners and a full load bearing capacity of 40kg or 70kg depending on width. All backed by the Blum lifetime guarantee of course.

Mix their LEGRABOX drawers with super-versatile interior organisation, AMBIA-LINE, and you have a system which not only performs superbly, but also gives quick and direct access to items stored within.

The SPACE TOWER larder from Blum is without doubt the ultimate larder solution. Widths from 300mm to 1200mm, and five internal drawers which pull out individually, mean that everything inside is immediately visible, and easy to retrieve.

Finally, if you want the sleek looks of a handle-less kitchen, then Blum's TIP ON BLUMOTION opening and closing system means doors and drawers open with a gentle push, and close softly and silently every time.

Think Blum. Think Differently. <<

The Blum logo, featuring the word 'blum' in a bold, lowercase, sans-serif font. To the left of the text is a stylized graphic of an upward-pointing arrow integrated with the letter 'b'.



Practical AMBIA-LINE accessories from Blum demonstrate a perfect combination of form and function. This spice holder perfectly organises your space.

Keep all your groceries in order and visible at a glance with SPACE TOWER from Blum featuring top to bottom inner pull-out drawers in Orion grey matt finish.

To find out more about Blum UK please call 0800 917 5550 or visit www.blum.com



Perfect results every day of the week.

Whatever kind of cook you are, our range of **Serie 8** built-in appliances are specially designed for your kitchen. From compact space savers to Added Steam ovens, every appliance is made to help you serve up delicious meals just the way you like them: effortless.

The easy way to perfect results.
Bosch-home.co.uk



BOSCH

Invented for life

Unique Destination

The Potton Self Build Show Centre is totally unique, comprising of five very different properties, each complete with a bespoke working kitchen. RK-Tec collaborates with Potton to show the best of design, products, and installation while telling the story of how this is achieved.



Potton's Self Build Show Centre is a unique destination in many ways. First, it consists of five totally contrasting types of home in a life-like setting. Second, their Self Build Academy provides an opportunity to learn about developing a self build project. Third, the RK-Tec members have partnered with Potton for a number of years, and almost all of the houses now incorporate a fully renovated kitchen to inspire the most discerning self builder or renovator.

Whatever your kitchen requirements, you can come & see what's on offer & learn what is involved'

The ability to view kitchens in real, yet totally contrasting situations is so useful when embarking on kitchen projects. At the Centre you can see designs created for a contemporary new-build, a large extension, a complete reconfiguration, a kitchen replacement utilising an existing footprint, and a further project coming soon currently in the planning stage. Whatever your kitchen requirements, you can come and see what's on offer and learn about what is involved via Kitchen Masterclasses held throughout the year.

The RK-Tec members are fortunate to utilise Potton's Show Centre to exhibit their latest products and concepts whilst promoting their message - the importance of the three vital ingredients required to ensure kitchens fulfil the end client's aims and ambitions; great design, great products and great project management.

The Elsworth - a new build, open plan, contemporary house incorporating Passivhaus technology. The kitchen follows simple straight-line geometry, but remains eminently stylish, practical and above all functional through the incorporation of the latest products on the market which bring this kitchen to life. >>

The Elsworth - a new build, open plan, contemporary house incorporating Passivhaus technology'



The latest appliances from Bosch were incorporated throughout, Dekton unveiled their luxurious XGloss ultra slim worksurface and Franke displayed their Centinox sink and Swiss Pro tap.



Potton demonstrate the comfort of low energy living with the UK's first show home designed and built to Passivhaus standards, the Elsworth.





COOKING PASSION SINCE 1877

ENJOY MORE
SPACE FOR
YOUR
COOKING
PASSION

INSEPARABLE LOVE: OUR HOB WITH INTEGRATED HOOD

Our new cooktop ventilation exceeds your expectations: the hob's own hood extracts steam and cooking aromas right where they originate. Your benefit? Maximum freedom and a deep breath: our two-in-one cooktop turns ventilating your kitchen into a breeze.



To learn more about the new cooktops with hood in one appliance: neff.xx



This Frame Effect display kitchen from Callerton offers a taste of the traditional with a twist of modern. Signature pieces such as the Edmonton chimney breast make this design truly unique.

Milchester – an imposing rectory on the outside, but entirely reconfigured internally. A total transformation of the ground floor creates an amazing kitchen, living and dining area. Shaker style furniture with modern interventions, ensures this kitchen stands out from the crowd. >>

Milchester – Shaker style furniture with modern interventions, ensures this kitchen stands out from the crowd’



The island has been designed as the primary preparation and wet area with the Franke Belfast VBK 720 and Bridge Lever tap.



Potton's impressive Milchester house at the Self Build Show Centre in St Neots.





The Callerton furniture mixes traditional painted and contemporary stained slab doors with Geo-metric features. Appliances for the Gransden are from Neff and worktops are by Silestone.

Gransden – a garden room extension, replacing an outdated and obsolete conservatory. Removing walls and adding an extension transforms the functionality of this space. A crossover/ hybrid design with Shaker and handle-less elements, contrasts with sleek modern appliances and worksurfaces.

Gransden - Removing walls & adding an extension transforms the functionality of this space'

Wickhambrook – a modern take on a traditional wooden barn, with a replacement kitchen. A large open plan hall/dining area leads to the kitchen. The concept for the new kitchen was confined to the existing footprint of the room, but with endless design possibilities, that didn't stop the end result from being transformational and awe-inspiring.

RK-Tec's involvement with Potton's Show Centre and Self Build Academy is a unique partnership. Where else can you visit a show village with such a diverse range of house types, incorporating contrasting styles of fully working kitchens, with all the latest products? Over and above you can attend lectures and seminars to learn how to create a dream kitchen for your home.

If you're in the market for a new kitchen and are in the vicinity of St Neots, get yourself along to Potton's Show Centre and Self-Build Academy. It doesn't disappoint and will leave you feeling inspired and excited to get your own project underway! <<

Wickhambrook - A modern take on a traditional wooden barn, with a replacement kitchen'



Siemens appliances combine beautifully with Callerton's kitchen furniture to produce a practical kitchen with designer aesthetics that make the most of the space available within the Wickhambrook.



WHY SHOULD YOU VISIT ... *THE POTTON* *SHOW CENTRE*

...TO DISCUSS YOUR PROJECT WITH OUR TEAM

The show centre is open 6 days a week (Monday – Saturday). Every weekday one of our self-build experts is available to discuss your project whatever stage of the journey you're at. You don't need to arrange a time to visit the show centre but you can **book an appointment to meet an expert through our website**. The team have a lot of experience between them and if they don't have the answers you need they'll be able to point you in the direction of someone that does.

OPEN

MON - FRI 9am - 5pm
SAT 10am - 4pm

...TO EXPLORE OUR OUR PRODUCT CENTRE & BUILD SYSTEMS

One product centre displays the insulated structural build solutions we design manufacture and construct. One centre shows our most build systems including Ultima, currently our most popular and the TEK system that is suitable for Passivhaus and very low energy builds like our Elsworth show home. The other product centre demonstrates some of the most popular window, door and stair products that we provide to Potton customers; the Potton Package is about so much more than the building structure and the centre will help you understand the full extent of our product offering.

Book an appointment on our website to meet with one of our Self-Build Consultants when you visit.
www.potton.co.uk

*New
Makeover*

...TO EXPLORE OUR FIVE, FINISHED & FURNISHED SHOW HOMES

Everyone loves a show home but don't visit us just to see the houses. Use them as a tool to help you think about how you want to live in your new home, how you want the rooms to flow into each other and how big you want individual spaces to be. It's also a good place to work out how you want to decorate your new home and explore kitchen and bathroom design options. Each of our show homes offers something different and the stunning Milchester, the largest home on our site, was completely remodelled and refurbished last year. Our show centre guide will help you move around the site, give room and plot dimensions and provides advice on how to budget for your new build.



...TO ATTEND AN EVENT OR COURSE

The show centre is also home to the Self Build Academy. Almost everything the academy does is free of charge and there is a range of courses and seminars to support you right from the very beginning of your journey. [Book your place on our website.](http://www.potton.co.uk)

www.potton.co.uk



POTTON SELF BUILD SHOW CENTRE
MILL LANE
LITTLE PAXTON, ST NEOTS
PE19 6EF

www.potton.co.uk
01480 403285

3rd Time Around

Designer Phil Durkin has been in the industry for 35 years. If his experience wasn't testament enough to the commitment and capabilities of a kitchen specialist, the fact the client of this kitchen employed him for the third time certainly is!



‘He knew the importance his client placed on being colourful, eclectic, & making a statement’



Balham 90 doors in two Flat Painted colours with True Oak accent piece, manufactured by Callerton in the North East of England.



The Siemens iQ700 built-in compact oven with microwave offers Home Connect, allowing access to control your oven, no matter where you are - with the easy-to-use Home Connect App.

Phil recognises the importance of establishing trust and a great working relationship with his clients. He of course explores the aims and ambitions for their projects, but further than that his typical approach is to look into their attitude to architecture, their lifestyle and to find inspiration from their preferences for books and artwork. In this case having worked together previously, he knew the importance his client placed on being colourful, eclectic, and making a statement.

Looking beyond the furniture layout of a kitchen project, Phil's passion for design sees him place equal emphasis on the architectural and technical aspects, as well as ergonomics and space management solutions. His throwaway comment "I spend more on steel per year than I do on appliances" aptly demonstrates his skills which he's honed over many years. This experience and knowledge allow him to think creatively and transform not only the kitchen element of his projects, but their adjoining living spaces too.

In Phil's words this project "incorporated a kitchen full of boxes, with no thought for design or purpose". His brief was to transform this and create a fluid space encompassing kitchen, living and dining with a vibrant aesthetic. >>

"This experience & knowledge allows him to think creatively & transform not only the kitchen element of his projects"

World Leading Quartz Surface for Kitchen & Bathroom Worktops & Floors



Silestone Eternal Marquina

Silestone® Benefits Include:



High Impact Resistance



High Stain Resistance



High Scratch Resistance



High Acid Resistance

Unique Characteristics

Resistant to scratches and impacts.
Resistant to acids and everyday liquids such as lemon, wine, etc...

The Widest Range of Colours

More than 60 colours to choose from. Silestone's advanced technology offers you the largest range of colours on the market. Exclusive Collections.

Different Textures

 Polished  Suede  Volcano

Certified Quality

Silestone® does not create any substances that are harmful to the environment, it complies with all the environmental and microbiological regulations and its production processes are certified.

25-year Warranty



The only brand with a certified warranty of 25 years.





Splashes of colour spread to all areas of this space making it vibrant with a youthful feel.



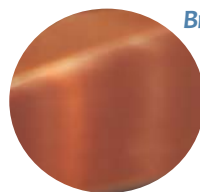
The colour palette of blue and grey furniture contrasts with light quartz worksurfaces and touches of oak in the pedestal and open shelving. The client specified a floor with a Moroccan feel, which makes a statement of the island and dining area. The ceiling feature injects another splash of colour and incorporates extraction and stylish pendant lights, and further pops of orange tones in the soft furnishings all adds to this unique look.

The colour palette of blue & grey furniture contrasts with light quartz worksurface & touches of oak'

To illustrate the type of relationship Phil builds with his clients and his attention to detail, take a look at the picture above the midi height oven area. This statement piece of art was a gift that has become a central element to the kitchen. It is a blown-up section of the homeowner's favourite painting seen through the door to the living room. A thoughtful touch which helps the rooms flow, reinforces the strong colour scheme, and is simply a great example of personalisation <<

Beautifully Blue

Get the Look



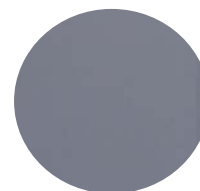
Brushed Copper
Malvern Handle



Chelsea
True Oak



Balham 90
Flat Painted Nautilus Blue



Balham 90
Flat Painted Special Paint Colour

KITCHEN & BATHROOM LIGHTING DESIGN SPECIALISTS

MAKING LIGHTING SIMPLE
Discover more at sensio.co.uk



innovate. create. illuminate.™

Sensio Lighting Limited
Unit 7, Speedwell Road,
Castleford, West Yorkshire,
WF10 5PY, United Kingdom.
T: +44 (0) 1977 522 020
E: info@sensio.co.uk

Kitchen Knowledge

Education is at the core of great kitchen design. Callerton has developed a training programme for Design Technicians with a view to developing the Senior Designers of the future. A brand new training suite forms the basis for the initial projects the delegates will be involved in before going on to visit RK-Tec members for training on their products.



The Siemens IQ700 induction hob with IQDrive, the integrated powerful and quiet extraction and ventilation system. This is positioned within the Dekton Laos and Soke of the island.

Callerton, the British kitchen furniture manufacturer and RK-Tec member, have a newly launched 'Training Suite' and offer a revolutionary Design Technician Training Programme.

'A revolutionary Design Technician Training Programme'

The Callerton team are an extremely able and enthusiastic bunch in relation to the importance they place on education and expansion of knowledge pertaining to kitchens. Callerton's strapline 'Turning Dreams to Reality' is extremely apt in their aim to make continuous developments within the industry and pursue the creation of outstanding kitchens for discerning clients.

'To learn over time how to design, specify, code, produce CAD imagery, cost and order the furniture element'

At the manufacturing facility in Sunderland, delegates train to join Callerton's team of Design Technicians based throughout the country, who they believe could be pioneering senior designers of the future. The training programme aims to provide Design Technician's with the ability to learn over time how to design, specify, code, produce CAD imagery, cost and order the furniture element of a kitchen project while considering the client's specifications, hopes, and ambitions.

'Develop from an initial idea & concept, to complete functioning kitchen'

Callerton's new training suite allows delegates to understand how kitchen projects develop from an initial idea and concept, to complete functioning kitchens which surpass expectations. The working display kitchen within Callerton's training suite is a hybrid style, combining Shaker painted frame effect furniture with sleek matt handle-less products. The layout is both stylish and functional – a point they consistently advocate. >>



A beautiful butlers pantry designed into a crossover/hybrid kitchen from Callerton.



The Vital Capsule filter tap range delivers fresh, clean tasting drinking water every time.



Callerton's brand new training suite with presentation area.

‘As Callerton’s training programme emphasises, kitchens are made-up of much more than the furniture element’

As Callerton’s training programme emphasises, kitchens are made-up of much more than the furniture element. The training suite kitchen incorporates products from all the RK-Tec partners; Siemens appliances, Franke sinks and taps, a mix of Silestone and Dekton worksurfaces, Sensio lighting, and Blum internal management systems. A combination of all the various products fulfils the dream.

‘Design Technicians learn how one space can be transformed in a variety of different ways’

Every client’s aims and ambitions for their kitchen will be individual to them. But by utilising the footprint of the training kitchen and changing the design criteria, delegate Design Technicians learn how one space can be transformed in a variety of different ways. The CAD imagery incorporated into this article shows this - a classic Shaker frame effect concept, a sleek curved deco design, and a stylish contemporary handle-less creation.

Callerton’s Design Technician Training Programme takes 12 months to complete and involves three residential sessions, two at Sunderland and one at the Potton Show Centre. The remainder is at the Technician’s own place of work and online, with much of the latter stage relating to real kitchen projects.

‘RK-Tec members are combining together to provide an ‘RK-Tec Design Technician’ accreditation scheme’

A further exciting development announced recently is RK-Tec members are coming together to provide an ‘RK-Tec Design Technician’ accreditation scheme. This will see the Design Technician fulfil Callerton’s programme, and also complete training with all the other members to become proficient in Siemens, Neff, Bosch, Franke, Carron, Silestone, Dekton, Sensio, and Blum products. Together, RK-Tec will provide complete kitchen design and product range knowledge for the best possible use of their products. <<



With the creativity of Callerton’s Frame Effect feature being combined with handles and handle-less doors, this mix of styles is truly different, most definitely now and perfectly crossover/hybrid.



The large floating bank and handle-less hi-gloss finish fused with wood effect make this modern intervention stand out.

Same Space
Different Style



This Grande Deco design brings in metallic and glass elements to give the soft curves a tough, industrial edge created in Winner Design.





Frame Effect pieces and Shaker doors from Callerton give this kitchen a traditional feel which is completed with a signature chimney breast and an exciting alternative island.

Ultra-Compact Surfaces

The high performing Ultra-Compact Surface, ideal for worktops, floors, walls & bathrooms



Dekton Xgloss Bergen

Dekton® Benefits Include:



Highly
UV Resistant



Scratch
Resistant



Resistant
to Stains



Max Resistance
to Fire and Heat



Resistant
to Abrasion



Superior Mechanical
Resistance



Dimensional
Stability



Fireproof
Material

It Resists Everything

Very high scratch resistance, practically zero porosity meaning it remains unaltered by aggressive products.

Limitless Inspiration

Design a unique and personal space with stunning colours and innovative textures. Practical and beautiful.

Relentless against Heat

Resistant to high temperatures and UV rays.

A Worktop to Enjoy

Incredibly low maintenance.

25-year Warranty



Your Dekton worktop has a warranty for 25 years.





Over 35 years of success in the manufacture of design-led kitchen furniture, places Callerton at the forefront of style, innovation and choice.

Aberdeen 01224 826 776 - Ayr 01292 618 277 - Barrow-in-Furness 01229 871 122 - Beaconsfield 01494 681 444
 Belfast 028 9020 9209 - Berwick-upon-Tweed 01289 306 784 - Bishop's Stortford 01279 501 642 - Broxburn 01506 862 780
 Cambridge 01223 213 266 - Castle Douglas 01556 504 978 - Colchester 01206 766 601 - Doncaster 01302 325 450
 Edinburgh (EH15) 0131 337 3434 - Glasgow (G4) 0141 404 7744 - Glasgow (G11) 0141 337 1435
 Glasgow (G76) 0141 644 1435 - Harrogate 01423 701 200 - Horsham 01403 790 812 - Ilkley 01943 817 477
 Wakefield 01924 872 995 - Kilmarnock (KA1) 01563 530 838 - Leeds 0113 294 1414 - London (NW2) 020 8452 7774
 Newcastle upon Tyne 0191 286 0514 - Newmarket 01638 560 778 - Oxford 01865 952 998 - Penrith 01768 895 566
 Sheffield 0114 236 6933 - Shipston-on-Stour 01608 690 870 - St Neots 01480 877 274 - Sterling/Tillicoultry 01259 237 010
 Stourbridge 01562 887 212 - Tain 01862 893 436 - Warrington 01925 636 997 - Wirral 0151 342 7442

The background of the advertisement is a futuristic, dark space with glowing blue lines forming a grid. In the center, there is a modern kitchen setup with white cabinetry, a built-in oven, a range hood, and two front-loading washing machines. To the right, a person is walking on a curved, glowing blue path that leads towards a digital cityscape with various skyscrapers. The Siemens logo is in the top left corner.

SIEMENS

Every connection makes your world grow.

Wi-Fi enabled Siemens Home Appliances with Home Connect bring connected intelligence to your kitchen.

Whether you would like to check the contents of your fridge from the shop, send recipes straight to your oven or manage your appliance through Amazon Alexa voice control, Home Connect has smart features that are designed for modern lifestyles, giving you more time to enjoy what you love.

siemens-home.bsh-group.com/uk

The future moving in.

Download and install
Home Connect App



Home Connect

Partners brought to you
by Home Connect



amazon alexa